

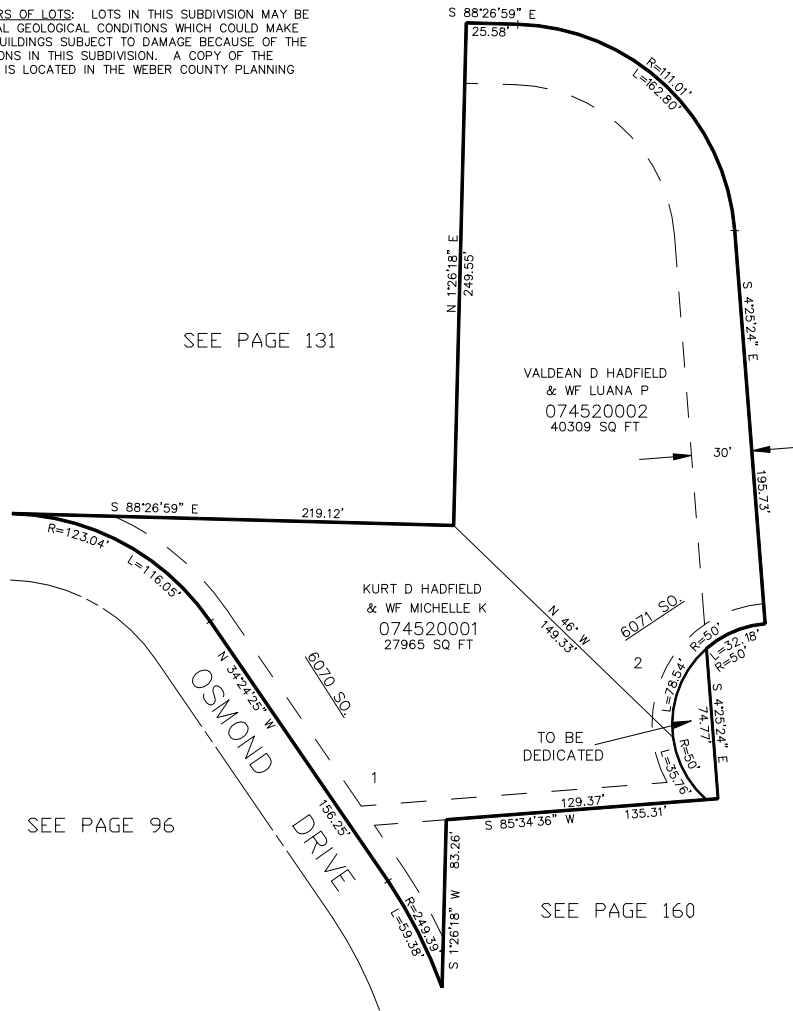
# WILLOW BEND SUBDIVISION

IN WEBER COUNTY

TAXING UNIT: 159

SCALE 1" = 50'

NOTE TO PURCHASERS OF LOTS: LOTS IN THIS SUBDIVISION MAY BE SUBJECT TO UNUSUAL GEOLOGICAL CONDITIONS WHICH COULD MAKE CONSTRUCTION OF BUILDINGS SUBJECT TO DAMAGE BECAUSE OF THE GEOLOGICAL CONDITIONS IN THIS SUBDIVISION. A COPY OF THE GEOLOGICAL REPORT IS LOCATED IN THE WEBER COUNTY PLANNING OFFICE.



FOR COMPLETE ENG DATA SEE ORIGINAL DEDICATION PLAT IN BOOK 38, PAGE 34 OF RECORDS.

10' UTILITY & DRAINAGE EASEMENTS EACH SIDE OF PROPERTY LINES AS INDICATED BY DASHED LINES EXCEPT AS OTHERWISE SHOWN.